



An ISO 9001:2008, CE & NSIC Certified Company
OCEAN LIFE SCIENCE CORPORATION



WATER BATH

MODEL NO:- OLSC-108

"Engineered for consistency, crafted for durability – our Water Baths bring precise temperature control from our lab to yours!"



WATER BATH **MODEL NO:- OLSC-108**

■ Heating Model

Most ideal for external temperature control applications to external systems such as Rotary Vacuum Evaporators, Refractometers, Polarimeters, Fermenters, Electrophoresis Chamber, Chromatography Columns, Condensers, Rheometers, and general laboratory cooling applications.

Salient Features

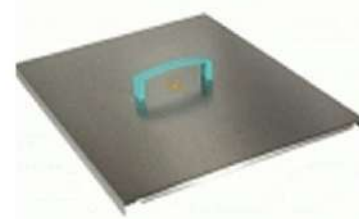
- ❖ Ergonomic Design
- ❖ Versatile Usage
- ❖ Energy Efficient Mechanism
- ❖ Low Noise and Vibration Levels
- ❖ Long Life and Low maintenance
- ❖ Conforms Standard
- ❖ Optional Shaking facility

Specification

- ❖ Microprocessor control for heating circulator with digital display
- ❖ Removable bottom plate for easy cleaning.
- ❖ Inner Chamber made of Stainless steel (SS 304)
- ❖ Outer body made of Electro galvanized steel epoxy powder coated or Stainless steel 304 grade
- ❖ Makrolon / Stainless steel bath cover.



MODELS	OLSC-108-20
Capacity (in ltrs)	20
Temperature range	5°C above ambient to 100°C
MOC (Outer)	Powder coated mild steel
MOC (Inner Chamber & Lid)	Stainless Steel sheet (S.S.-304 Grade)
No. of 75mm diameter hole provided	Optional
Temperature Accuracy	±0.5°C
Temperature Uniformity	±1°C
Water Tank	Stainless steel, surface electrolysis treatment
Heater	Stainless steel U type heating tub
Temperature Control Mode	PID Controller
Timer (OPTIONAL)	0 ~ 999 min (with timing function)
Timing Function	Fixed temperature operation, timing function, auto stop
Program	Optional: multi-section program control
Sensor	Pt-100
Safety Device	Over-temperature alarm, short-circuit protection Dry run protection, Audio / visual warnings for safety temperatures 130°C, Over temperature cut out.
Power Rating	800 W
Inner chamber size (WxLxH)	12"x10"x10"
Insulation	Filled with high grade mineral wool
Control panel	Keypad / Soft touch
Advisable	Do not use water above 90°C (use silicon oils above 90°C)
Design	Space saving compact design, liquid drain facility
Power	220-240 Volts, 50/60 AC supply
SHAKING SPEED (Optional)	20-200 RPM



OCEAN LIFE SCIENCE CORPORATION

Address: A3/27A, Chanakya Place, Part-1, Opp: C-2 Janak Puri, Pankha Road New, Delhi-110059,
Email: info@olsc.us, olsc.lab@gmail.com